

170-172.5

18.5

17

90

Оммеракновашу form

JACK BOLT

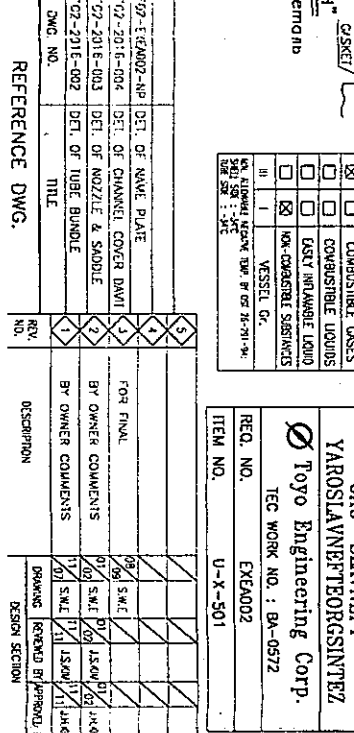
1/16

20

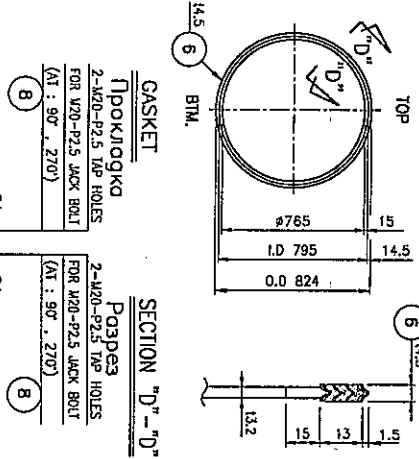
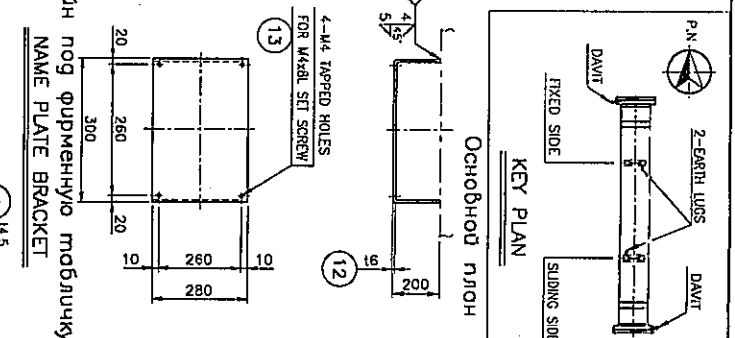
10

13

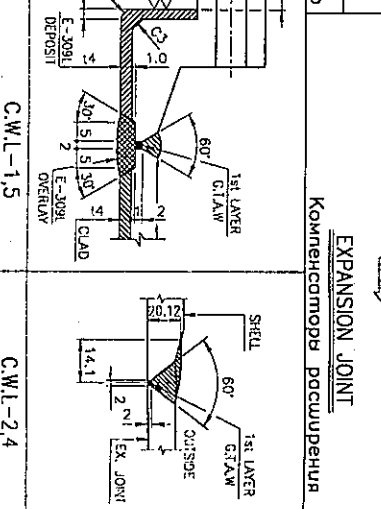
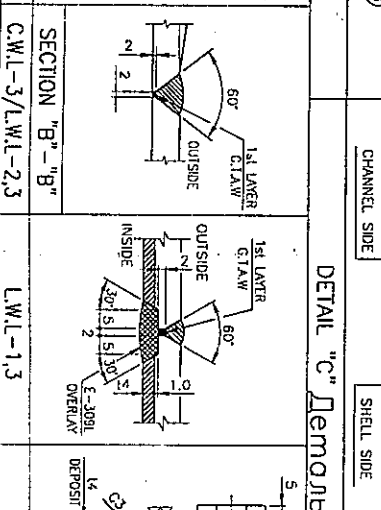
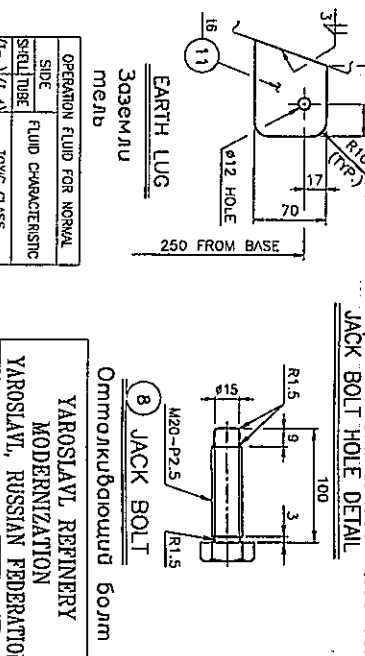
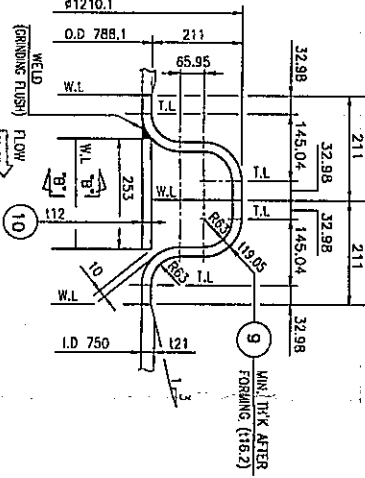
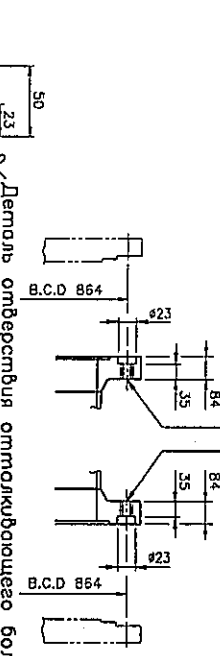
5/16



72



(SEE NOTE "10")
(FULL R.T.)
422



YAROSLAVL REFINERY MODERNIZATION YAROSLAVL, RUSSIAN FEDERATION OAO "SLAVNEFT- YAROSLAVNEFTORSINTEZ Ø Toyo Engineering Corp. IEC WORK NO. : BA-0572	REG. NO. EXEA002
--	---------------------

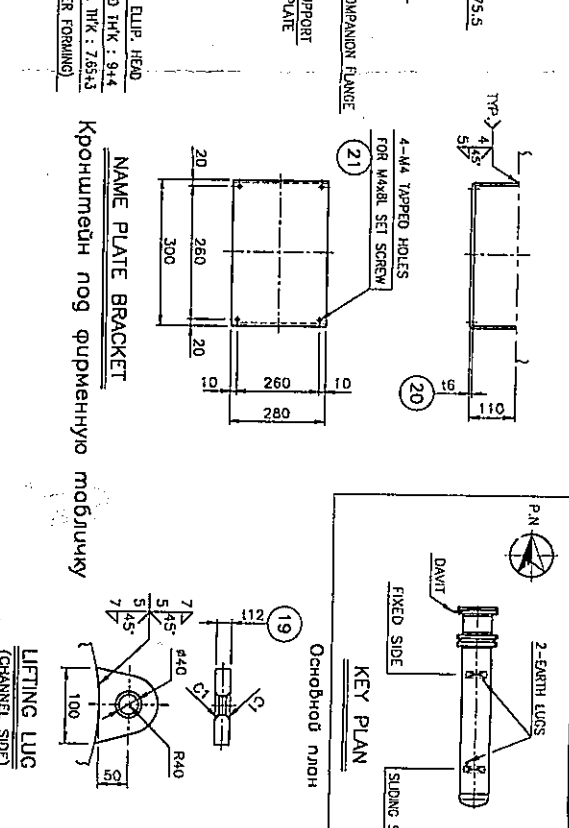
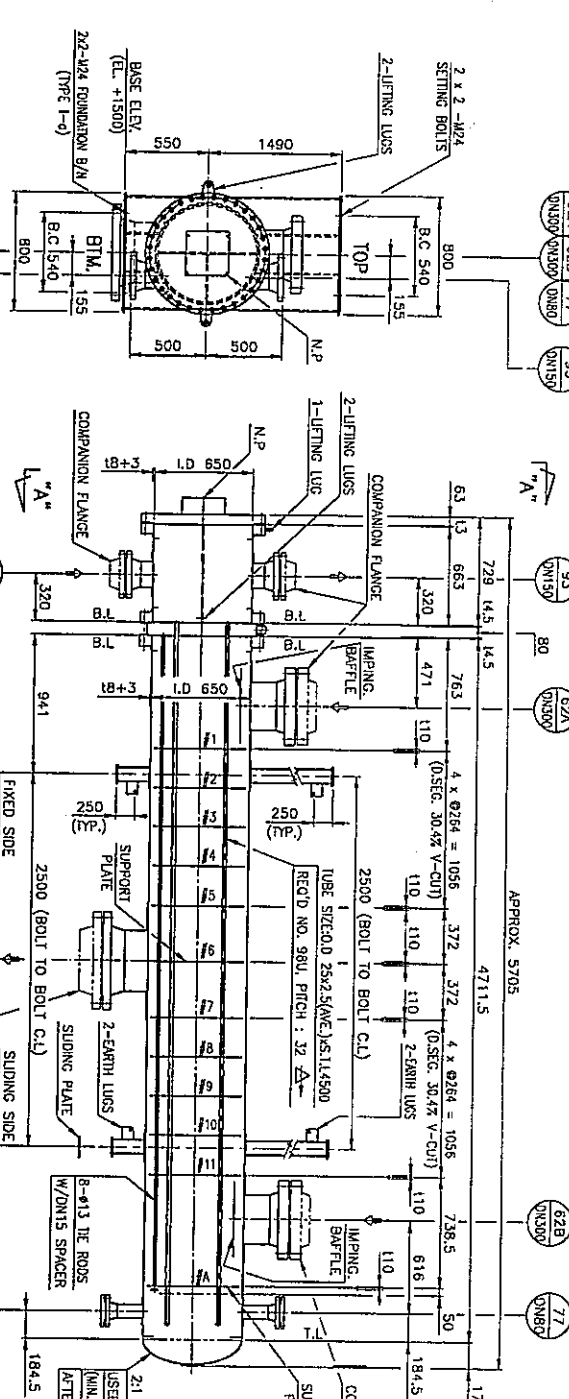
[illegible]

WAZZLE NO.	PROD NO.	MAX SIZE	SQL NO.	PLANT RATING	SERVICE	REMARKS	10 € PRODUCTION
63	1	150	120	ASPE 6001 W.M.R.I.D	LIQUID INLET Bldg spears		680
73	1	150	120-3	ASPE 6002 W.M.R.I.D	LIQUID OUTLET Bldg spears		680
81	1	400	120-3	ASPE 3004 W.M.S.I.D.⑤	OS INLET Bldg 3030		720
92	1	400	120-3	ASPE 3004 W.M.S.I.D.⑤	MAX OUTLET Bldg 3030		720
96	1	80	40	ASPE 3004 W.M.S.I.D.⑤	DRAIN Dipstick	W/B/F	670
97	1	80	40	ASPE 3004 W.M.S.I.D.⑤	VENT Bldg 3030	W/B/F	670
V	1	20	-	ASPE 6001 W.M.R.I.D	VENT Bldg 3030	W/B/F	890
D	1	20	-	ASPE 6001 W.M.R.I.D	DRAIN Dipstick	W/B/F	890

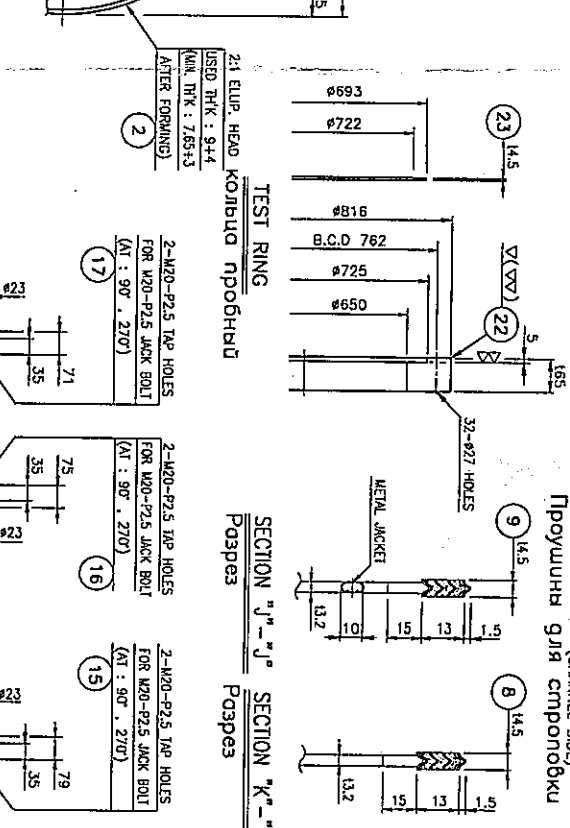
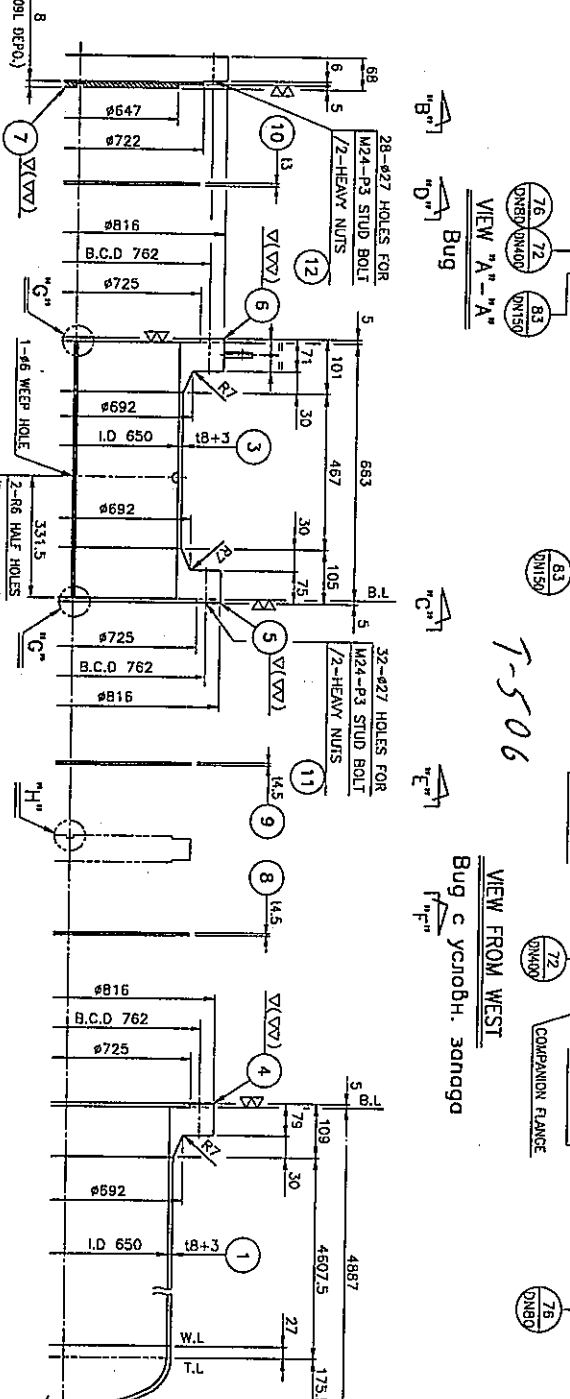
1	ITEM	NAME OR PART CODE	QUANTITY	UNIT	REMARKS
2					
3					
4					
5					
6					
7					
8					
9					
10					
11					
12					
13					
14					
15					
16					
17					
18					
19					
20					
21					
22					
23					
24					
25					
26					
27					
28					
29					
30					
31					
32					
33					
34					
35					
36					
37					
38					
39					
40					
41					
42					
43					
44					
45					
46					
47					
48					
49					
50					
51					
52					
53					
54					
55					
56					
57					
58					
59					
60					
61					
62					
63					
64					
65					
66					
67					
68					
69					
70					
71					
72					
73					
74					
75					
76					
77					
78					
79					
80					
81					
82					
83					
84					
85					
86					
87					
88					
89					
90					
91					
92					
93					
94					
95					
96					
97					
98					
99					
100					

YAROSLAVL REFINERY MODERNIZATION PROJECT				ISSUE DATE	
"ОАО "СЛАВНЕФТ-ЯРОСЛАВНЕФТЕОРГСИНТЕЗ" YAROSLAVL, RUSSIAN FEDERATION					
Ø TOYO ENGINEERING CORPORATION TEC WORK NO. YD005 JAPAN BA-0572 EA					
TITLE		BFW PREFEATHER EXCHANGER		ISSUE DATE	
U-T-505		Обменник предподогревателя			
APPROVED BY		RECEIVED BY		DATE	
J.M.M	J.S.KIM	-	S.W.R	2002.09.10	
SCALE		DATE		DWG NO.	
1/25				2002-07-C049	
DAEWU ENGINEERING CO., LTD.		U.S.A.N. KOREA		DKT02-2014-001	
				REV NO.	
				3	

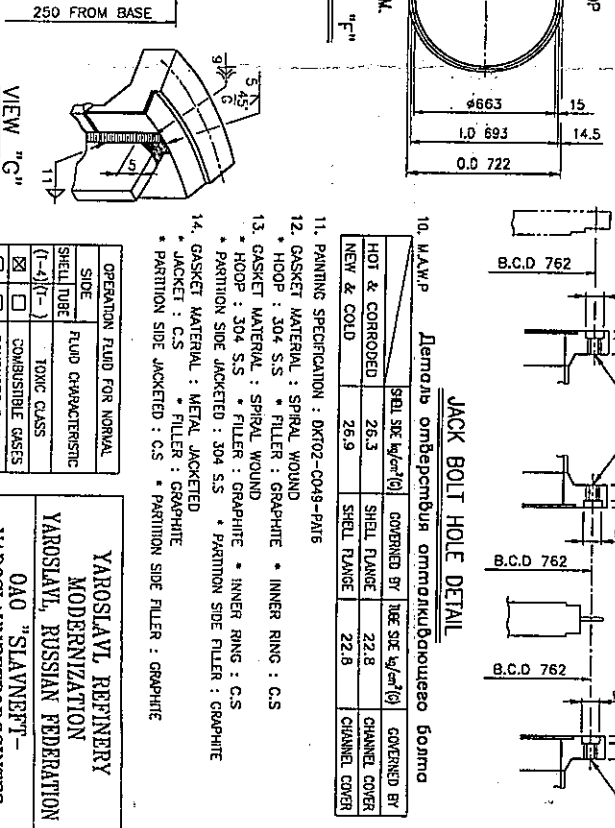
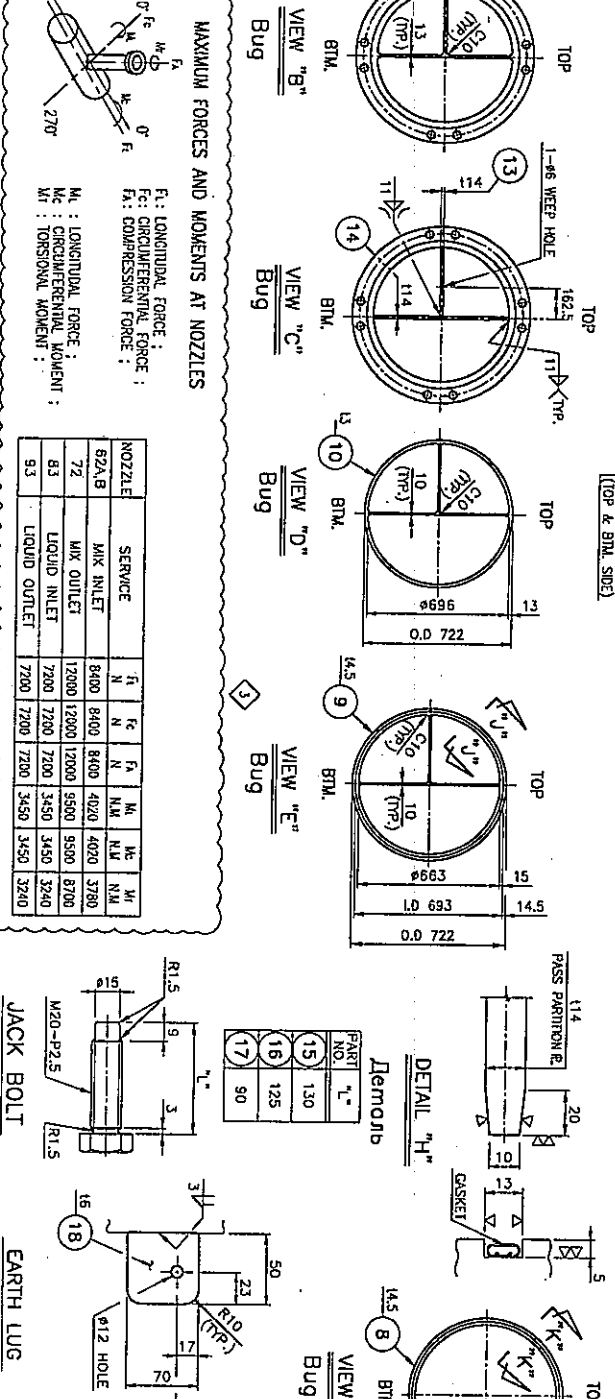
7-506



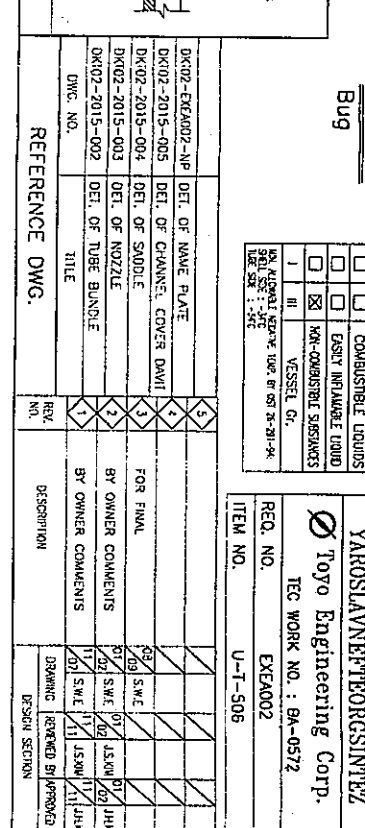
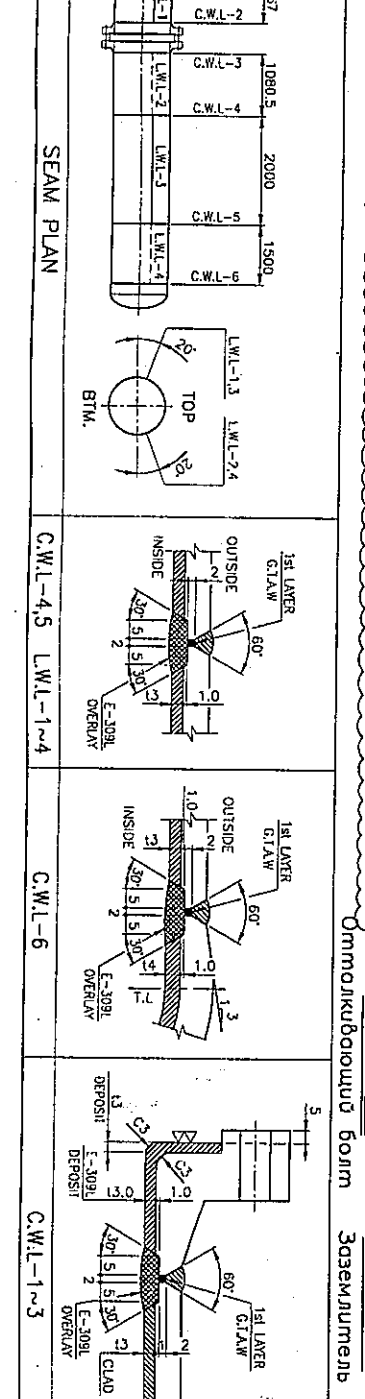
DESIGN DATA			
CODE	СМОНТОР	ПОСЛЕД. ПОДГОТОВКИ	И-АУ
DESIGN	26.0 & FV	20.0	NONE
OPERATING	20.9	2.19	NO. OF SHELL CORROSION PROTECT 1 (ONE)
TEST	0.175	0.175	NO. OF WELDED JOINTS 1 (ONE)
TEMP.	260 & 120	156	MAXIMUM OPERATING TEMPERATURE 353.0
WEIGHT	34 / 55	28.6	WEIGHT (KG) 3530
OPERATING	156 / 135	28.6	WEIGHT (KG) 3530
FLUID	WATER	WATER	WATER
CONTENT	WATER	WATER	WATER
INSULATION	HOT (140)	HOT (90)	INSULATION 115.3 KG (M)
HEAT EXCHANGER	-	-	HEAT EXCHANGER 203.6 KG
FLUID	WATER	WATER	WATER



NOZZLE LIST			
NOZZLE NO.	NOZZLE NAME	NOZZLE SIZE	NOZZLE TYPE
1	WATER INLET	1/2"	WATER INLET
2	WATER OUTLET	1/2"	WATER OUTLET
3	WATER INLET	1/2"	WATER INLET
4	WATER OUTLET	1/2"	WATER OUTLET
5	WATER INLET	1/2"	WATER INLET
6	WATER OUTLET	1/2"	WATER OUTLET
7	WATER INLET	1/2"	WATER INLET
8	WATER OUTLET	1/2"	WATER OUTLET
9	WATER INLET	1/2"	WATER INLET
10	WATER OUTLET	1/2"	WATER OUTLET
11	WATER INLET	1/2"	WATER INLET
12	WATER OUTLET	1/2"	WATER OUTLET
13	WATER INLET	1/2"	WATER INLET
14	WATER OUTLET	1/2"	WATER OUTLET
15	WATER INLET	1/2"	WATER INLET
16	WATER OUTLET	1/2"	WATER OUTLET
17	WATER INLET	1/2"	WATER INLET
18	WATER OUTLET	1/2"	WATER OUTLET
19	WATER INLET	1/2"	WATER INLET
20	WATER OUTLET	1/2"	WATER OUTLET
21	WATER INLET	1/2"	WATER INLET
22	WATER OUTLET	1/2"	WATER OUTLET
23	WATER INLET	1/2"	WATER INLET
24	WATER OUTLET	1/2"	WATER OUTLET
25	WATER INLET	1/2"	WATER INLET
26	WATER OUTLET	1/2"	WATER OUTLET
27	WATER INLET	1/2"	WATER INLET
28	WATER OUTLET	1/2"	WATER OUTLET
29	WATER INLET	1/2"	WATER INLET
30	WATER OUTLET	1/2"	WATER OUTLET
31	WATER INLET	1/2"	WATER INLET
32	WATER OUTLET	1/2"	WATER OUTLET
33	WATER INLET	1/2"	WATER INLET
34	WATER OUTLET	1/2"	WATER OUTLET
35	WATER INLET	1/2"	WATER INLET
36	WATER OUTLET	1/2"	WATER OUTLET
37	WATER INLET	1/2"	WATER INLET
38	WATER OUTLET	1/2"	WATER OUTLET
39	WATER INLET	1/2"	WATER INLET
40	WATER OUTLET	1/2"	WATER OUTLET



JACK BOLT HOLE DETAIL			
NO.	NAME	SIZE	TYPE
1	WATER INLET	1/2"	WATER INLET
2	WATER OUTLET	1/2"	WATER OUTLET
3	WATER INLET	1/2"	WATER INLET
4	WATER OUTLET	1/2"	WATER OUTLET
5	WATER INLET	1/2"	WATER INLET
6	WATER OUTLET	1/2"	WATER OUTLET
7	WATER INLET	1/2"	WATER INLET
8	WATER OUTLET	1/2"	WATER OUTLET
9	WATER INLET	1/2"	WATER INLET
10	WATER OUTLET	1/2"	WATER OUTLET
11	WATER INLET	1/2"	WATER INLET
12	WATER OUTLET	1/2"	WATER OUTLET
13	WATER INLET	1/2"	WATER INLET
14	WATER OUTLET	1/2"	WATER OUTLET
15	WATER INLET	1/2"	WATER INLET
16	WATER OUTLET	1/2"	WATER OUTLET
17	WATER INLET	1/2"	WATER INLET
18	WATER OUTLET	1/2"	WATER OUTLET
19	WATER INLET	1/2"	WATER INLET
20	WATER OUTLET	1/2"	WATER OUTLET
21	WATER INLET	1/2"	WATER INLET
22	WATER OUTLET	1/2"	WATER OUTLET
23	WATER INLET	1/2"	WATER INLET
24	WATER OUTLET	1/2"	WATER OUTLET
25	WATER INLET	1/2"	WATER INLET
26	WATER OUTLET	1/2"	WATER OUTLET
27	WATER INLET	1/2"	WATER INLET
28	WATER OUTLET	1/2"	WATER OUTLET
29	WATER INLET	1/2"	WATER INLET
30	WATER OUTLET	1/2"	WATER OUTLET
31	WATER INLET	1/2"	WATER INLET
32	WATER OUTLET	1/2"	WATER OUTLET
33	WATER INLET	1/2"	WATER INLET
34	WATER OUTLET	1/2"	WATER OUTLET
35	WATER INLET	1/2"	WATER INLET
36	WATER OUTLET	1/2"	WATER OUTLET
37	WATER INLET	1/2"	WATER INLET
38	WATER OUTLET	1/2"	WATER OUTLET
39	WATER INLET	1/2"	WATER INLET
40	WATER OUTLET	1/2"	WATER OUTLET



JACK BOLT HOLE DETAIL			
NO.	NAME	SIZE	TYPE
1	WATER INLET	1/2"	WATER INLET
2	WATER OUTLET	1/2"	WATER OUTLET
3	WATER INLET	1/2"	WATER INLET
4	WATER OUTLET	1/2"	WATER OUTLET
5	WATER INLET	1/2"	WATER INLET
6	WATER OUTLET	1/2"	WATER OUTLET
7	WATER INLET	1/2"	WATER INLET
8	WATER OUTLET	1/2"	WATER OUTLET
9	WATER INLET	1/2"	WATER INLET
10	WATER OUTLET	1/2"	WATER OUTLET
11	WATER INLET	1/2"	WATER INLET
12	WATER OUTLET	1/2"	WATER OUTLET
13	WATER INLET	1/2"	WATER INLET
14	WATER OUTLET	1/2"	WATER OUTLET
15	WATER INLET	1/2"	WATER INLET
16	WATER OUTLET	1/2"	WATER OUTLET
17	WATER INLET	1/2"	WATER INLET
18	WATER OUTLET	1/2"	WATER OUTLET
19	WATER INLET	1/2"	WATER INLET
20	WATER OUTLET	1/2"	WATER OUTLET
21	WATER INLET	1/2"	WATER INLET
22	WATER OUTLET	1/2"	WATER OUTLET
23	WATER INLET	1/2"	WATER INLET
24	WATER OUTLET	1/2"	WATER OUTLET
25	WATER INLET	1/2"	WATER INLET
26	WATER OUTLET	1/2"	WATER OUTLET
27	WATER INLET	1/2"	WATER INLET
28	WATER OUTLET	1/2"	WATER OUTLET
29	WATER INLET	1/2"	WATER INLET
30	WATER OUTLET	1/2"	WATER OUTLET
31	WATER INLET	1/2"	WATER INLET
32	WATER OUTLET	1/2"	WATER OUTLET
33	WATER INLET	1/2"	WATER INLET
34	WATER OUTLET	1/2"	WATER OUTLET
35	WATER INLET	1/2"	WATER INLET
36	WATER OUTLET	1/2"	WATER OUTLET
37	WATER INLET	1/2"	WATER INLET
38	WATER OUTLET	1/2"	WATER OUTLET
39	WATER INLET	1/2"	WATER INLET
40	WATER OUTLET	1/2"	WATER OUTLET

7-506